

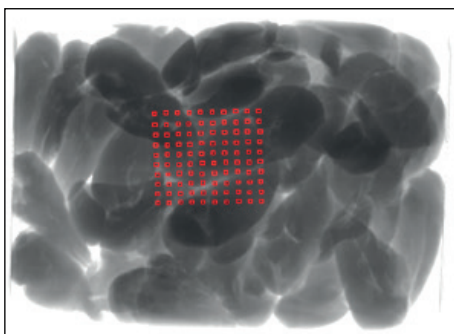
# RAYCON H+ W

## Product inspection system for the inspection of packaged and unpackaged piece goods in E1 or E2 boxes

- High-precision inline detection of metallic and non-metallic contaminants
- Highest detection accuracy also with differing product composition in the container
- Reduced costs for maintenance and cleaning due to hygienic design according to EHEDG guidelines
- IP 66 / 69K rating for use under rough environmental conditions (high-pressure cleaning)
- High-speed inspection with up to 1,000 containers/h, e.g. with E2 boxes
- BRC, IFS and HACCP compliance



Unpacked products (e.g. meat and sausage products) in containers



E2 box with test card for stainless steel Ø2.5mm (100% detection accuracy)



# RAYCON H+ W

## Performance features



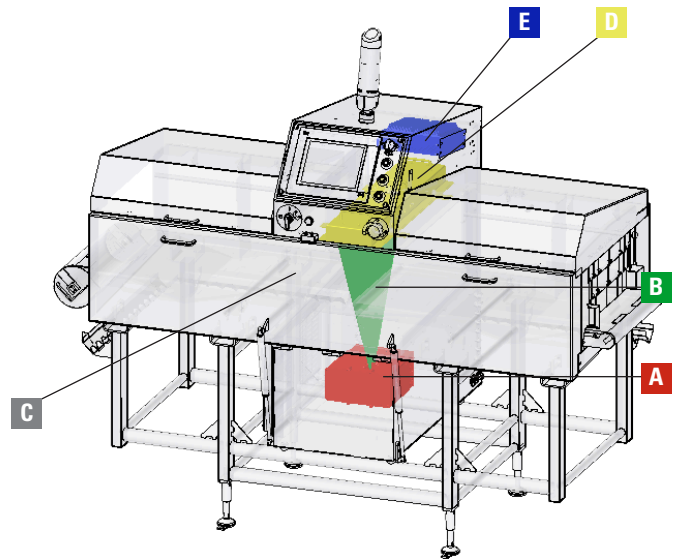
RAYCON H+ W product inspection systems detect all contaminants that due to their density, chemical composition, or mechanical dimensions absorb X-radiation to a lesser or greater degree than the surrounding product. For example, metal, glass, ceramics, and stone contaminants in food.

RAYCON will also detect some plastics (e.g. PVC, rubber) as well as other product defects (e.g. cracks, trapped air). Desired "contaminants" (e.g. aluminium clips on sausage chubs) can be masked out.

Outstanding performance features of the RAYCON H+ W product inspection system:

- High-power, long-live X-ray tube
- Minimum maintenance required, system cooling is ensured by way of air-conditioner
- High-resolution detection unit (contaminants such as stainless steel starting from a size of 0.6 mm can be detected depending on the product)
- Excellent radiation protection according to the German X-ray ordinance RöV (<1mSv/a); low-wear, hygienic design in stainless steel
- Reduced costs for maintenance and cleaning due to modular and hygienic design based on current EHEDG guidelines

## Function



**The system comprises the following main components:**

**A X-ray tube**

X-rays are emitted from the tube and collimated through a narrow slot, entering the product as a fan shaped beam from bottom to top. Product height and density determines the amount of radiation absorbed.

**B X-ray beam**

**C Transport system**

A variable speed conveyor belt transports product through the collimated, line X-ray beam. Scanning takes place line by line.

**D Detector unit**

The linear detector row installed above the conveyor belt converts the incident X-radiation into an electric signal, from which a digital X-ray image can be created and processed.

**E Industry PC**

Evaluation of the X-ray image for contaminants and other product defects is performed here.

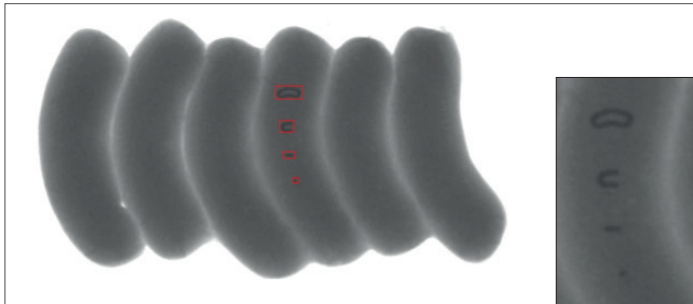
# Software advantages

The following standard sizes are available:

	Belt width:	max. product dimensions (WxH):
RAYCON H+ W 400/250	500 mm	400 x 250 mm

## Processing software

X-ray images are evaluated product specific image processing. Contaminated or defective products are detected and separated.



X-ray image with detected aluminium clips in the product

X-ray image with aluminium clips (zoom)

With the easy-to-use auto-train function a new product can be learned in a very short time. Contaminants such as aluminium clips can be differentiated from the product depending on their density. The RAYCON H+ W product inspection system visualises this density difference.

## Cleaning:

For cleaning purposes the side covers can be folded up, and the conveyor belt can then be cleaned or completely removed. No tools are needed for this, which ensures that use of tools and required time are kept at an absolute minimum.

For safety reasons all the components required for radiation protection are equipped with safety switches to eliminate any possibility of escaping radiation.



## Important information:

X-radiation is classified as ionising radiation but it is not radioactive! In compliance with EU directive 1999/2/EC, Sesotec X-ray systems due to the minimum radiation energy can be used for the contaminant inspection of food materials and with organic products.

The RAYCON product inspection system is subject to statutory X-ray regulations and requires certification.

It is important to observe any country specific regulations!

For more specific information please request our detailed technical data sheet.

## Sesotec GmbH

Regener Straße 130  
D-94513 Schönberg  
Germany  
Tel. +49 8554 308-0  
Fax +49 8554 2606  
info@sesotec.com  
www.sesotec.com

## Sesotec system world



### Detecting and separating contaminants:

Removing contaminants:

- metals
- plastics
- glass
- ceramics, porcelain, stones
- and many others

Removing from (good material):

- bulk materials
- liquids and pastes
- individually packaged product
- packed and loose items

Product types:

- end-products (food, textiles, plastics etc)
- industrial raw materials
- recycled materials

can be integrated into all types of conveyor systems



### Detecting and separating sub-standard products:

Qualitative defects:

- incorrect colour
- agglomerations
- breakages
- air inclusions in packs
- incorrect positioning / distribution

Quantitative defects:

- incorrect weight
- count errors (incorrect number of items in package)

Product types:

- end-products (food, textiles, plastics etc)
- industrial raw materials
- recycling materials

can be integrated into all types of conveyor systems



### Sorting mixed materials into single fractions:

Types of material:

- glass
- plastics
- metals
- and many others

Delivery flows:

- bulk materials
- individually packaged product

can be integrated into:

- conveying systems
- bulk material flows

## Operating Companies:



**Sesotec Ltd.**  
Hampshire  
United Kingdom  
Tel.: +44 1489 553 740  
info@sesotec.co.uk  
www.sesotec.co.uk



**Sesotec Sàrl**  
France  
Tel.: +33 388 04 2230  
info@sesotec.fr  
www.sesotec.fr



**Sesotec S.r.l.**  
Milano  
Italy  
Tel.: +39 02 7010 2377  
info@sesotec.it  
www.sesotec.it



**Sesotec Inc.**  
Bartlett  
USA  
Tel. +1 224-208-1900  
info@sesotec.us  
www.sesotec.us



**Sesotec Canada Ltd.**  
Cambridge  
Canada  
Tel.: +1 519-621-6536  
info@sesotec.us  
www.sesotec.ca



**Sesotec Pte. Ltd.**  
Singapore  
Tel.: +65 6562 8875  
info@sesotec.com.sg  
www.sesotec.com.sg



**Sesotec Pvt. Ltd.**  
Pune  
India  
Tel.: +91 20 2425 2147  
info.india@sesotec.com  
www.sesotec.com



**Sesotec Shanghai Co. Ltd.**  
Shanghai  
China  
Tel.: +86 21 37005075  
enquiry@sesotec.com.cn  
www.sesotec.com.cn



**Sesotec Representative Office**  
Üsküdar/Istanbul  
Turkey  
Tel: +90 216 504 18 72  
info@sesotec.com  
www.sesotec.com

... and more than 40 agencies worldwide

Made in Germany

For further information or to discuss your particular application contact one of our specialists.

[www.sesotec.com](http://www.sesotec.com)



**Choose the Original  
Choose Success!**