

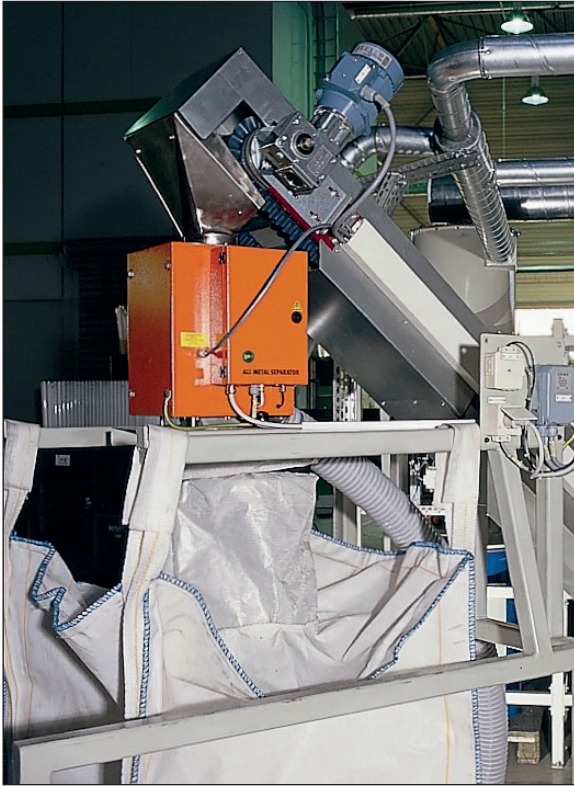
RAPID COMPACT

Metal separator for free-fall applications

- Detects and separates magnetic and non-magnetic metal contamination, even when enclosed in product
- Reduces expensive machinery failure and minimises production downtime
- Ensures product quality
- Prevents customer complaints
- Break even within a very short period of time



- Compact system with excellent price/performance ratio
- Minimum space requirement and can be easily fitted into existing pipeline systems
- Standard Jacob adaptors for inlet and outlet ensure quick, hassle-free installation
- Minimal waste through „Quick-Flap“ rejection system
- Easily accessible controls (sensitivity, rejection time, etc.) for “fine tuning” to site conditions easily accessible
- Enhanced signal-to-noise-ratio minimises electromagnetic pollution and vibrations



Metal separator RAPID COMPACT used for the quality control of plastic granulate

Scope of delivery:

- Compact unit with integral detection and rejection systems
- Control Unit MSG 3.4 K

Options/Accessories:

- Audible and visual alarm systems
- Feed hopper and filler inlet
- Magnet system to remove Fe contaminants
- Filter and regulator valve
- Air pressure monitor
- UL/CSA Certification
- Removable control unit

Typical Application Areas:

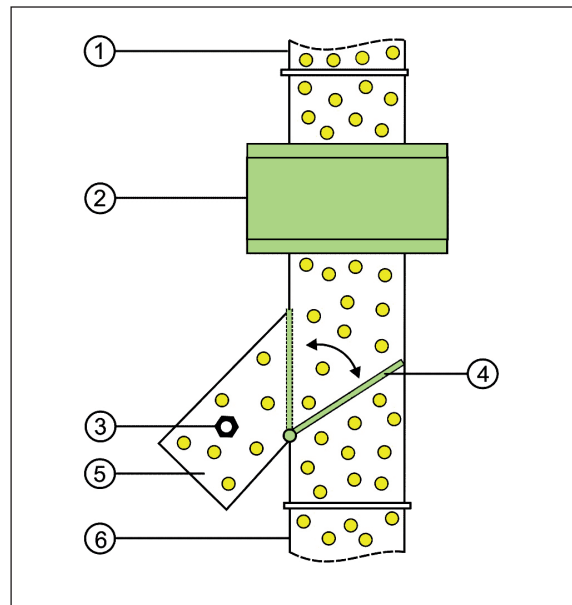
- Plastics industry, In-house recycling
- Recycling industry
- Wood industry
- Chemical industry
- Feedingstuff industry

Product Description:

The RAPID COMPACT metal separator is used to inspect bulk goods under free-fall conditions. It detects all magnetic and non-magnetic metal contaminations (steel, stainless steel, aluminium) – even when enclosed in the product. Metal contaminations are rejected through the “Quick Flap” reject unit.

The RAPID COMPACT is used mainly in with low hygiene applications.

Function Chart:



1) Infeed 2) Detection coil 3) Metal contaminant
 4) Separation flap 5) Rejected material 6) “Good” Material

Application:

- Machinery protection for extruders, blow moulding machines, fine grinding mills, after dosing (rotary valve, vibratory feed chutes)
- Quality control e. g. for pre-delivery inspection of incoming goods, granulate, reclaim, bagging stations, dryers and packing stations